

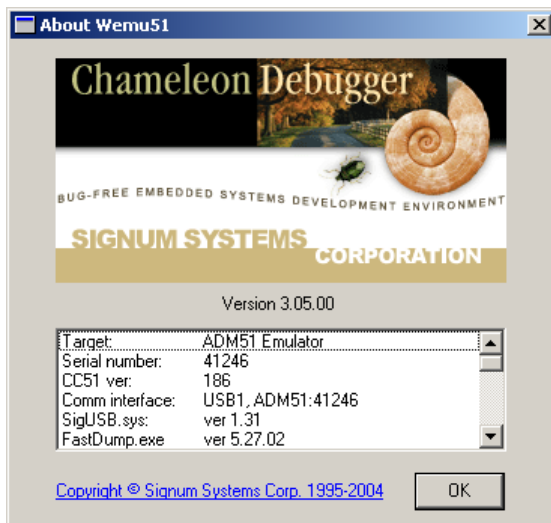
## **Signum ADM51 In-Circuit Emulator Software (Chameleon Wemu51) Revision 3.07.00 for the USP-51/ADM51 Download and Setup**

### **Introduction:**

Many customers received the software revision 3.05.00, or earlier revisions for the Signum ADM51 emulator. This PC-resident software is known as Chameleon or Wemu51. A significant upgrade is now available, and it is highly recommended to install this upgrade as soon as possible.

The new software revision better reads/writes on-chip XDATA memory by applying the correct number of wait-states when accessing the memory. This feature is based on definitions stored in an external file which allows easy customization if other settings are needed.

The Help menu in the Debugger provides the current revision when “About Wemu51” is selected. You will probably see a display as shown below:



## Download Instructions:

The software revision 3.07.00 or newer revisions are available for legitimate users on the Signum Systems website. The download and installation procedure is as follows:

1. Download the **51w95.zip** file from the web page <http://www.signum.com/support.htm>.  
On the support web page, scroll down to WINDOWS 95/98/NT/2000/XP 32-bit Software and select 51w95.zip from the table. This file is approximately 7.4MB large.
2. Create a new directory, e.g. **C:\temporary**, on your PC and unzip the file in it, using PK Zip or a comparable program. You will have to use as password (case sensitive) to extract the files from the archive: **w51!v30700\*3ix7l** - please note that the last letter is a lower case "L".  
Newer revisions of the program may have a different password. Use the password utility provided on the Signum Support web page to obtain the current password.
3. Install the software by running the extracted **setup.exe** file. Follow the instructions starting from page 2 of the "Chameleon for USP-51 Installation Instruction" document. This document can be found on the Signum website (the main setup screen on page 1 will not show up):  
[http://www.signum.com/images/pdf/wemu51\\_inst.pdf](http://www.signum.com/images/pdf/wemu51_inst.pdf)
4. Remove the directory created in step 2. Optionally, remove the old Chameleon directory as well if you created a new directory to install Wemu51 3.07.00 in. The installation of 3.07.00 uninstalls the old Chameleon program if it is installed into the same directory, usually **C:\Program Files\Signum Systems\Wemu51**.
5. If you experience problems, start Chameleon in a DOS window as follows:  
C:\> cd "c:\Program Files\Signum Systems\Wemu51"  
C:\Program Files\Signum Systems\Wemu51> wemu51 -j -x  
quit it and email all the .log files in Chameleon's directory at [support@signum.com](mailto:support@signum.com).

## USB Driver Installation Instructions:

A new USB driver installation is only necessary when the Wemu51 program is installed on a PC that had not previously been used for the ADM51 Emulator.

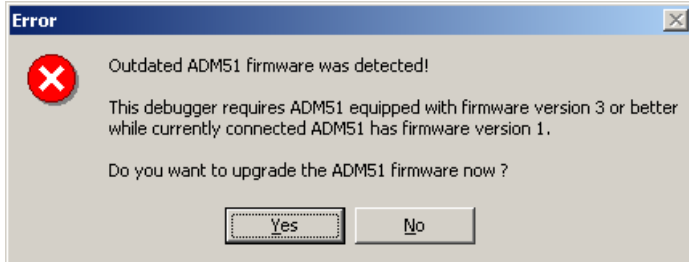
When the ADM51 Emulator is plugged into the USB port, the PC will recognize the device. If not, the PC will automatically offer installation of the USB driver. The driver files can be found under the following directory:

<Drive\_letter>\Program Files\Signum Systems\Wemu51\Drivers\USB\...

### Using WEMU51 3.07.00:

Upon starting the program, users will be prompted to select a project directory and define the probe hardware as well as the target device. Simply make the same selections as when you first installed the original WEMU51 software.

As soon as the program communicates with the emulator hardware it will display an alert message as shown below:

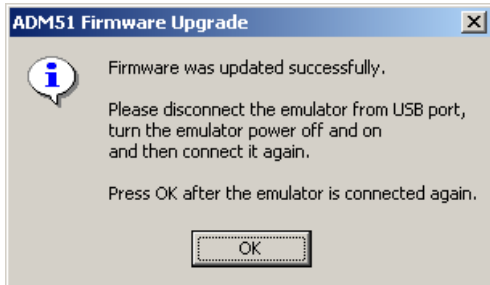


This message means that the new WEMU51 software wants to upgrade the firmware in the emulator pod in order to make it compatible with the PC program. Click “Yes” to start the upgrade process. The hardware upgrade will only take about 20 seconds.

**Note: For Wemu51 revision 3.07.01 the on-screen messages are slightly different.**

**IMPORTANT: Do not turn the power to the emulator off and do not disturb the process in any other way during the upgrade process! Permanent loss of emulator firmware will occur if the upgrade process is terminated prematurely.**

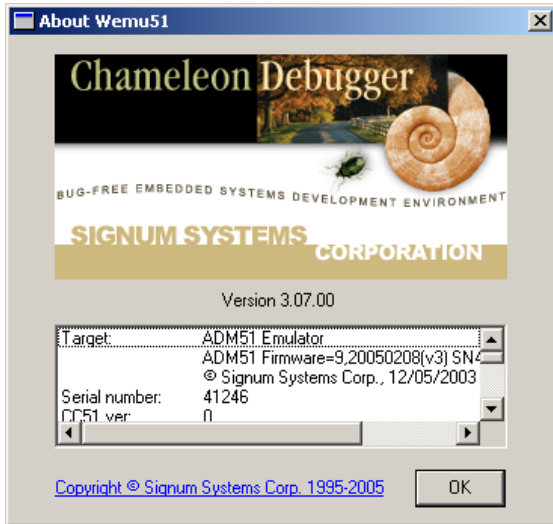
After the upgrade, the following message will be displayed:



Follow the instructions given in the dialog box above.

**IMPORTANT: Follow the instructions in the dialog box precisely! If the emulator is not disconnected from the USB port and the emulator power is not turned off and on before clicking the OK button, malfunction will occur.**

When the “About Wemu51” option is selected in the Help menu, the following dialog box will be displayed, confirming that the emulator pod had been properly updated (to Firmware=9,20050208(v3)):



**Compatibility:**

Once, an emulator pod is upgraded to firmware revision 3, it will no longer be compatible with Wemu51 software earlier than revision 3.07.00.

Conversely, Wemu51 software revisions 3.07.00 or 3.07.01 will not accept emulator pods with firmware revisions earlier than 3.

This product is sold subject to the terms and conditions of sale supplied at the time of order acknowledgment, including those pertaining to warranty, patent infringement and limitation of liability. TERIDIAN Semiconductor Corporation (TSC) reserves the right to make changes in specifications at any time without notice. Accordingly, the reader is cautioned to verify that the data sheet is current before placing orders. TSC assumes no liability for applications assistance.

TERIDIAN Semiconductor Corp., 6440 Oak Canyon Rd., Irvine, CA 92618  
TEL (714) 508-8800, FAX (714) 508-8877, <http://www.teridian.com>